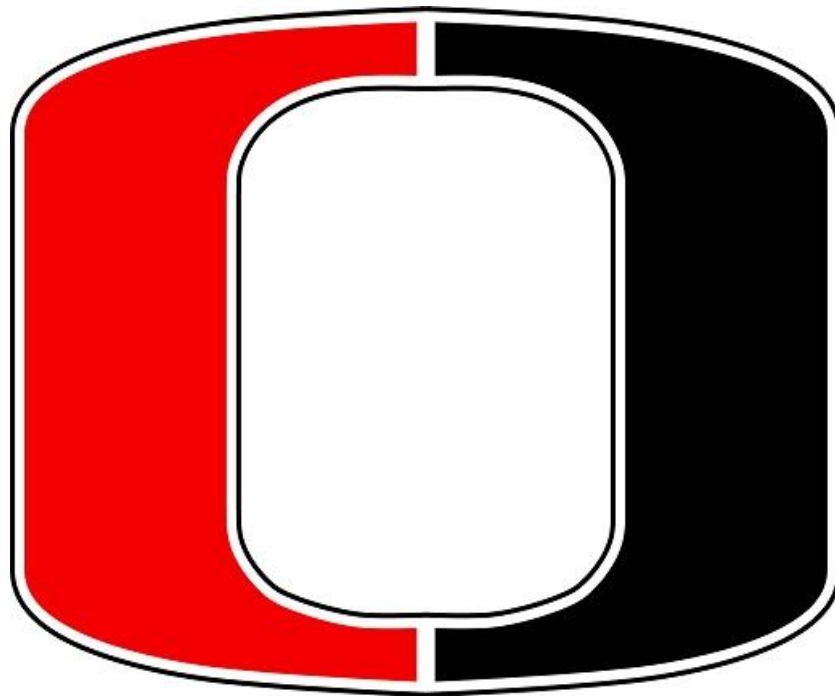


ODESSA R-VII SCHOOL DISTRICT



2021-22 IN-PERSON INSTRUCTION PLAN

*This is the most recent update - July 28, 2021
With frequently changing guidance, this plan will be updated accordingly*

Table of Contents

Introduction	2
Proactive Strategies	2
Screening	2
Physical Distancing	5
Masks & Face Coverings	5
Hand Washing	7
Cleaning & Maintenance	7
Vaccinations	7
Accommodations for Students with Disabilities	7
Reactive Strategies	8
Contact Tracing	8
Symptomatic at School	8
Returning After being a Close Contact	8
Academic Success	8
Bus Transportation	8
Attendance & Building Visitors	9
Social & Emotional Health	9
Reopenings of Events	9
Resources	9
Stakeholders & Review Process	10
District Contact Information	10



Introduction

This document contains operating guidance that aims to provide clarity and consistency operating strategies. It is important to note that information contained in this document is guidance issued from the state and local level.

There are no state or local health mandates related to K-12 school operations issued at this time.

Proactive Strategies

The Proactive Strategies that the Odessa R-VII Schools will implement to mitigate the spread of COVID-19 and best protect their students, staff members and communities, including minimum protocols regarding the following:

- Screening
- Physical Distancing
- Mask/Face Coverings
- Hand Washing
- Cleaning & Maintenance

Screening

The school will implement a process for daily screening for symptoms of and exposure to COVID-19. Parents and caregivers are encouraged to screen children for symptoms (listed below) at home, prior to coming to school.

- Fever or chills
- Cough
- Headache
- Muscle aches
- Nausea, vomiting or diarrhea
- New loss of taste or smell
- New runny nose or congestion
- Shortness of breath or difficulty breathing
- Sore throat
- Close contact with a person with COVID-19 in the last 14 days

This list is subject to change as new symptoms of COVID-19 are identified. It is important to note, however, that temperature screenings are of low sensitivity.

Students with symptoms should not attend school and parents should consult their healthcare provider and follow CDC considerations regarding their return to school. For students who are diagnosed with COVID-19, either by a laboratory test or based on their symptoms, return to school is permissible when the student is at least 10 days from symptom onset, has been without a fever for 24 hours and has improving symptoms. Return to school for children with an alternate diagnosis is at the discretion of their healthcare provider and/or the school nurse. Immunocompromised children and children

with severe illness may require a longer duration of isolation (e.g. 20 days) and should be discussed with the child's healthcare provider.

At-home screening helps to further protect other students, school staff members, and communities as a whole. Performing a daily screening before a student arrives at school also reduces the likelihood that a student will have to be isolated at school and sent home after experiencing COVID-19 symptoms.

Screening Students for COVID-19

Children should be visually inspected for signs and symptoms of illness as they enter the school and/or classroom. School leaders may choose to perform additional screening at school, but these measures have proven to be labor-intensive and often do not provide conclusive results.

Screening Staff Members for COVID-19

School staff members will self-screen at home, following the same protocol listed above for families screening students at home. School leaders may choose to perform additional screening at school, but these measures have proven to be labor-intensive and often do not provide conclusive results.

Screening Visitors for COVID-19

Visitors to the buildings will be limited, however if someone is visiting a school building, they will be subject to screening if determined by the administration of building health professionals.

A record of visitors inside the school will be kept, and it will include areas of the school that were visited and the time the visitor entered and exited the building.

The district will use the following algorithm to determine student status:

Student Symptom Decision Tree

Screen all students for potential COVID-19 symptoms or exposure

Low-risk: general symptoms



Fever ($\geq 100.4^{\circ}\text{F}$)



Sore throat



Congestion/runny nose



Headache



Nausea/vomiting/diarrhea



Fatigue/muscle or body aches



Cough



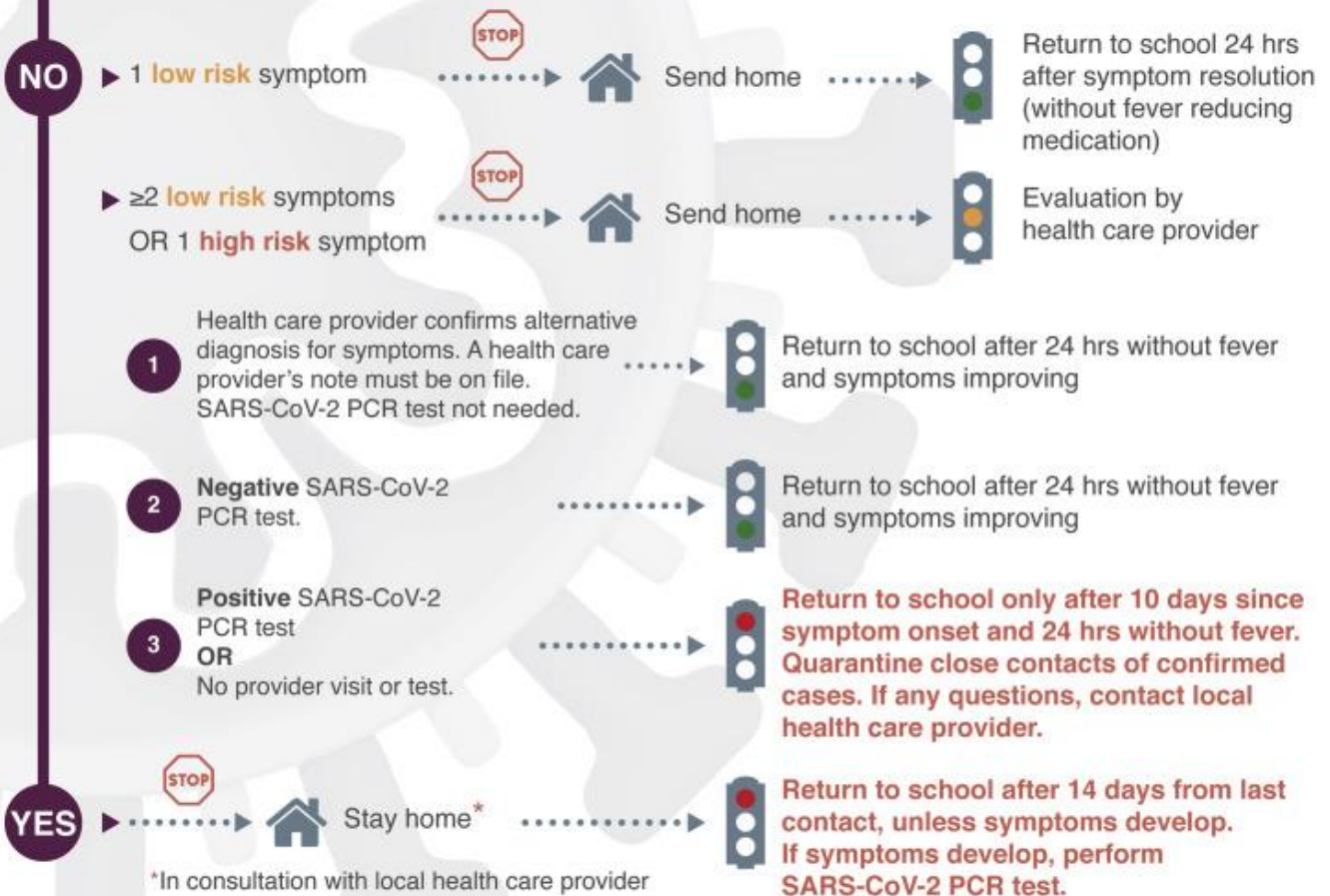
Difficulty breathing



Loss of taste/smell

Exposure to COVID-19 positive person?

Close contact: less than 6 feet, 15 minutes or longer



This care pathway was designed to assist school personnel and is not intended to replace the clinician's judgment or establish a protocol for all patients with a particular condition. Diagnosis and treatment should be under the close supervision of a qualified health care provider.

Physical Distancing

Physical distancing is one measure that has been demonstrated to reduce the spread of the novel coronavirus. Distances of three to six feet may be effective in reducing viral transmission. However, in conjunction with local guidance, a person is considered a “close contact” of a case of COVID-19 if they are within six feet of the case for more than 15 minutes.

Throughout the course of the school day, teachers and other building staff will plan activities that foster distancing to the greatest extent possible.

Masks & Face Coverings

In accordance with the Lafayette County Health Department, masks are recommended for all unvaccinated individuals over the age of two. There is no mask requirement or mandate, but such recommendations are in place throughout the District.

Wear a mask. Stay in school.



COVID-19 School Scenarios

with no documented transmission in the classroom setting

EVERYONE MASKED

When a masked person tests positive and those exposed are wearing masks

COVID +

Close Contacts



ISOLATE



SELF-MONITOR
AND QUARANTINE
CAN ATTEND SCHOOL

CLOSE CONTACTS MASKED

When an unmasked person tests positive and those exposed are wearing masks

COVID +

Close Contacts



ISOLATE



QUARANTINE
CANNOT ATTEND SCHOOL

CLOSE CONTACTS UNMASKED

When a masked person tests positive and those exposed are not wearing masks

COVID +

Close Contacts



ISOLATE



SELF-MONITOR
AND QUARANTINE
CAN ATTEND SCHOOL



QUARANTINE
CANNOT ATTEND SCHOOL

NO ONE MASKED

When an unmasked person tests positive and those exposed are not wearing masks

COVID +

Close Contacts



ISOLATE



QUARANTINE
CANNOT ATTEND SCHOOL

CLOSE CONTACT:

Someone who was within 6 feet of a person diagnosed with COVID-19 for a cumulative total of 15 minutes or more throughout a 24-hour period starting from 2 days before illness onset (or, for asymptomatic patients, 2 days prior to test specimen collection).

SELF-MONITOR:

Perform a self-check or be monitored daily for symptoms of COVID-19 over a 14-day period. Contact your health care provider with questions about symptoms.

QUARANTINE:

The practice of separating individuals who have had close contact with someone diagnosed with COVID-19 to determine whether they develop symptoms or test positive for the disease.

ISOLATION:

The practice of separating people diagnosed with COVID-19 from others who are not sick to prevent further exposures and/or spread of the disease.

Hand Washing

Students will have access to, and be regularly encouraged and instructed to thoroughly wash their hands throughout the school day. Additionally, students and staff are encouraged to use hand sanitizer. This helps prevent a variety of infections because:

- People frequently touch their eyes, nose, and mouth without even realizing it. Germs can get into the body through the mouth, nose, and eyes and make us sick.
- Germs transfer from unwashed hands to other objects, such as handrails, tabletops, or keyboards, and then to another person's hands.
- Removing germs through handwashing, therefore helps prevent diarrhea and respiratory infections and may even help prevent skin and eye infections.

Cleaning & Maintenance

The District will continue additional cleaning efforts each evening, in each building. Like throughout the 2020-2021 school year, these may include wiping surfaces with additional disinfectant products, fogging areas where suspected contaminants may have been in contact, etc. Where spacing allows, classroom seating will be spaced apart.

Vaccinations

Many individuals throughout the district have been vaccinated against the COVID virus. Students and staff are not required to be vaccinated, but have that individual option should they believe that is the best decision for them and their circumstances.

If a person is more than 14 days out from their last vaccination shot, they will not be required to isolate/quarantine unless they display COVID symptoms.

Anyone who has not been vaccinated but is interested in receiving a COVID vaccination can contact the Lafayette County Health Department for assistance in receiving the vaccination.

Accommodations for Students with Disabilities

Any appropriate accommodation will be made for students in need of such. If a student has needs mandated by an Individual Education Plan, those needs will be met. Families should reach out to their child's building principal to discuss specific needs.

Reactive Strategies

Contact Tracing

Upon notification of a positive case within the district, district health personnel will work closely with the Lafayette County Health Department and take all necessary steps to appropriately identify students, staff or visitors who may have been affected. Those identified as Close Contacts will be required to follow the LCHD procedure on isolating/quarantining.

Symptomatic at School

All students and staff members who become symptomatic while at the school require immediate isolation and should wear a medical-grade mask until they are no longer in the building. Students who are sick should be walked out of the building to their parent/guardian.

Returning After being a Close Contact

A close contact will quarantine for 10 days from the last date of exposure. An individual can test as early as Day 5. If they test negative on Day 5, they are released from quarantine on Day 7. If an individual is showing symptoms, including allergy-like, they must quarantine for the full 10 days.

If an individual is within 90 days of a positive date, no quarantine will be issued unless symptoms are present.

Academic Success

Students' academic success is of utmost importance each day. With many children having lost academic learning time throughout the 2020-2021 school year, each building will have additional learning opportunities available for students. Examples would include, but not be limited to: tutoring, online learning resources and scheduled time during the day to access additional resources.

Bus Transportation

School buses remain a place where physical distancing is not possible, additionally at this time, federal law mandates *anyone, regardless of vaccination status, who rides a school bus is required to wear a face covering*. Specific details on this requirement can be found [here](#) on the US Dept. of Transportation website. If there is a concern with the lack of social distancing or the requirement to wear a mask, the district encourages parents to bring their child to school. Federal transportation guidelines may further dictate additional measures.

Strategies to reduce contact on buses and risk of infection can include:

- Screening of COVID-19 symptoms at home prior to getting on the bus.
- Encouraging hand hygiene upon boarding the bus.

- Assigning students to seats so contacts are stable.
- Seating siblings together.

Attendance & Building Visitors

Visitors to the buildings will be limited, with precautions in place for those who are allowed access into the schools. Individuals should contact the building prior to visiting to check the current status of whether or not visitors are being allowed.

Social & Emotional Health

Student and staff social, emotional and mental health needs are taken into consideration with each decision made by the district. Without a healthy mind and balance in one's daily life, learning becomes difficult or impossible. The district has professional counselors and social workers available on campus every day if a student or staff member needs assistance.

Reopenings of Events

Student activities will be open to spectators. Check the district website regularly for updates on dates and times of school events.

Resources

[Lafayette County Health Department](#)

[MO Department of Health & Senior Services](#)

[MO Department of Elementary and Secondary Education - COVID-19 Resources](#)

[When and How to Wash Your Hands](#)

[Symptoms of Coronavirus](#)

[How Coronavirus Spreads](#)

[COVID-19 Reporting Form](#)

If you, or someone you know, needs this plan translated or read to them, please contact Mr. Dave MacLean at the Central Office at 816-633-5316.

Stakeholders & Review Process

A group of stakeholders, including students, parents, teachers and administrators, will review and update the plan regularly, every six months at a minimum.

District Contact Information

Jon Oetinger, Ed.D.
Superintendent
joetinger@odessar7.net
816-633-5316

Roger Feagan, Ed.D.
Assistant Superintendent
rfeagan@odessar7.net
816-633-5316